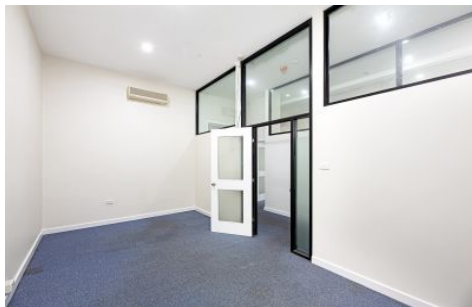


GUNNING



Level 1/Suites 1-4/824-826 George Street Chippendale NSW

Gunning Real Estate is pleased to present this quality space in an iconic building on George Street.

Key features:

- Area: 60sqm approximately
- Comprising 4 rooms, bathroom, and an additional toilet
- Large windows providing good natural light
- Air conditioned
- Carpeted
- Extra storage available
- Available immediately
- May suit Creative businesses, Consultants, Tuition centres & colleges (previously used as classrooms) and fashion groups
- Corner location, great exposure prominent building
- Close proximity to UTS and Sydney University

Price : Contact Agents
Building Size : 60 sqm
View : <https://www.gunningre.com.au/lease/nsw/sydney-city/chippendale/commercial/offices/8004251>



Tushar Bakshi
02 9698 0222



Daniel Gunning
02 9698 0222