

# GUNNING



## Level 1/Suite 8/229 Macquarie Street Sydney NSW

Gunning Real Estate is pleased to present this affordable office suite with windows and own internal sink.

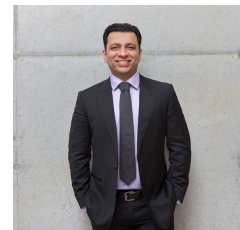
The suite is located within William Bland Centre, a 12-storey commercial tower comprising commercial and retail accommodation. The building has a commanding east facing street presence to Macquarie Street and the main lobby area is impressive with high ceilings and an integrated café business next to the lift lobby area.

The building is opposite Sydney Hospital & Sydney Eye Hospital, and adjacent to Federal/Supreme Courts. Martin Place and St James Train Stations, Westfield Sydney, Hyde Park are only minutes' walk away, making this space ideal for professionals such as health providers, legal practitioners and a full range of commercial operators/business professionals.

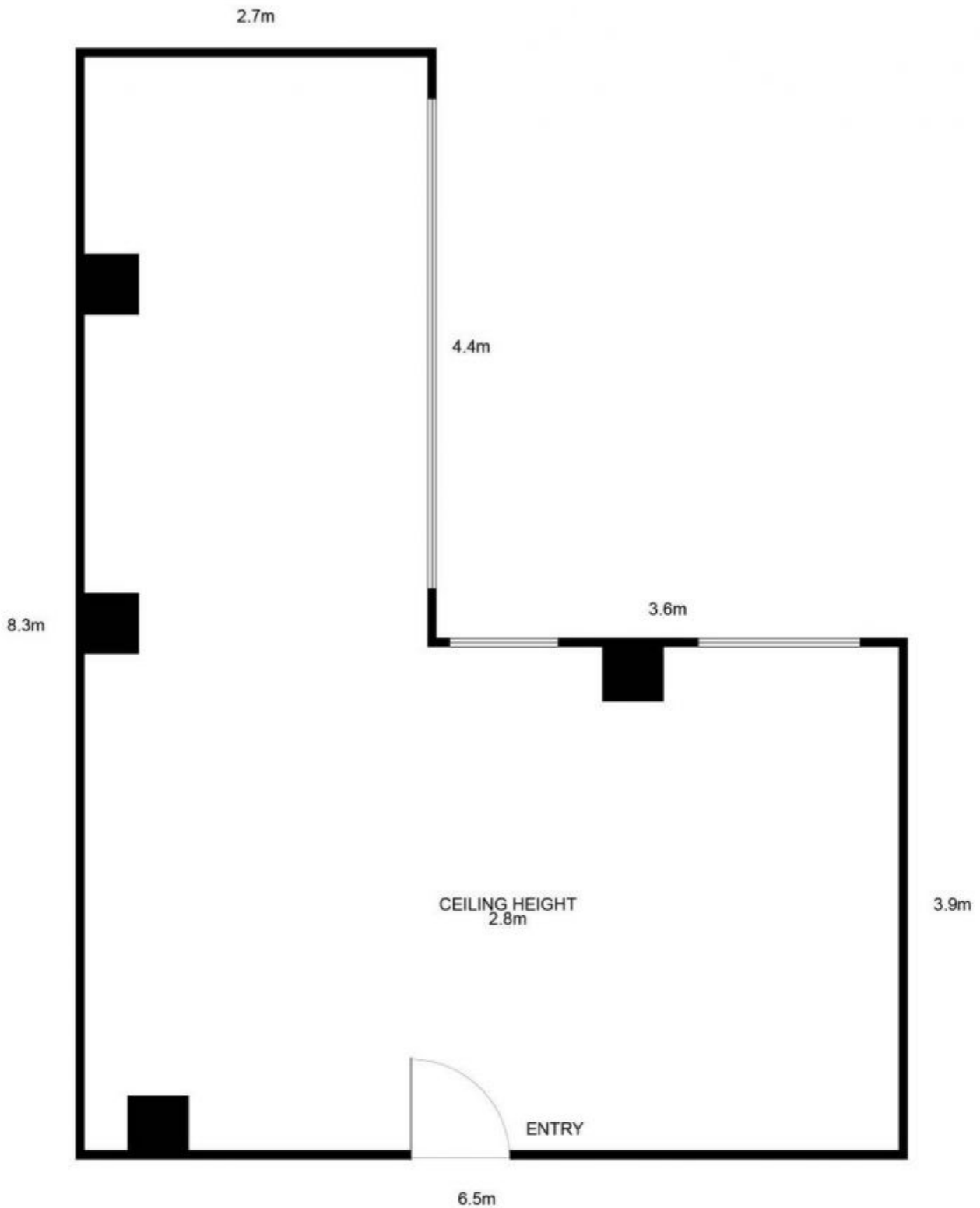
**Price** : \$385 per week + GST, No Outgoings  
**Building Size** : 37 sqm  
**View** : <https://www.gunningre.com.au/lease/nsw/sydney-city/sydney/commercial/offices/7914931>



**William Wu**  
02 9698 0222



**Tushar Bakshi**  
02 9698 0222



LOT 8, 229 - 231 MACQUARIE STREET, SYDNEY



This floor plan is intended as a guide only. Layout dimensions are approximate only. No representations or warranties of any nature whatsoever are given or intended. Any person using this information should rely on their own enquiries. Floor Plans by SURROUNDPIX.