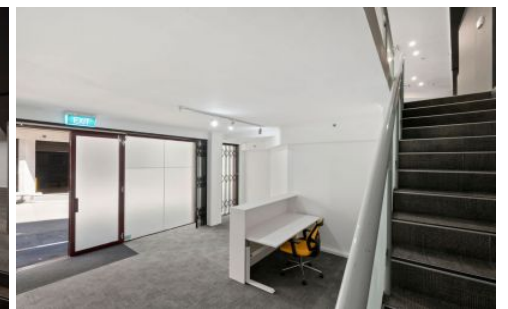


GUNNING



Level 1/20 Poplar Street Surry Hills NSW

Gunning RE is pleased to present to the market this unique split level, creative office space in high demand Surry Hills.

The property is centrally positioned close to the Oxford Street shops and Oxford Shopping Village and also minutes to Central Station, CBD, Hyde Park & Surry Hills lifestyle amenities.

The property offers an abundance of natural light, its' own entrance lobby directly from Poplar Street and also benefits from the residential amenities of a Swimming Pool, Sauna, Gym and spa.

Key features of the property include:

- Ground floor 30sqm (approx)
- First floor 130sqm (approx)
- Open plan layout

Building Size : 160 sqm

View

: <https://www.gunningre.com.au/sale/nsw/eastern-suburbs/surry-hills/commercial/offices/5731441>