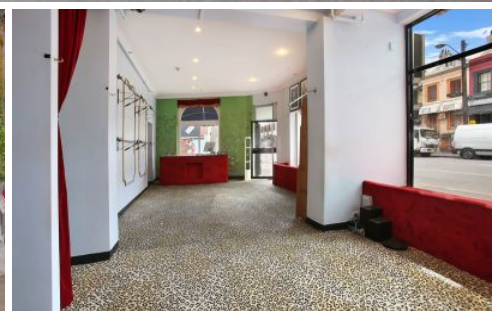


GUNNING



259 Crown Street Surry Hills NSW

Strategically located on the corner of Crown and Goulburn Street, this property features;

- Approx. 100 sqm on street level
- 15m of Street exposure
- High ceilings & Storage room
- Close proximity to Oxford Street and restaurants
- Suitable for a wide range of uses

Building Size : 100 sqm
Land Size : 100 sqm
View : <https://www.gunningre.com.au/lease/nsw/eastern-suburbs/surry-hills/commercial/retail/5731346>

For more information or to inspect, please contact the agents today:

Alberto Da Grava: 0416 919 423
Anthony Tsapicounis: 0422 473 077