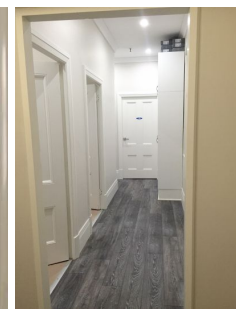
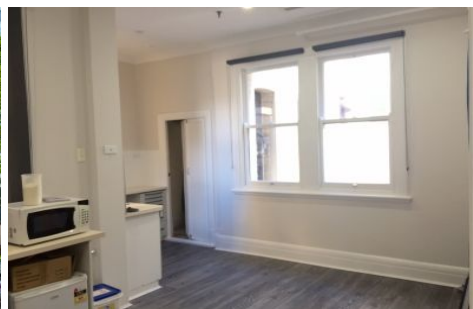


# GUNNING



## 802/235 Macquarie Street Sydney NSW

Gunning Real Estate is pleased to offer for lease this fantastic Medical Suite located on the top floor of the prestigious Beanbah Chambers.


Current partitioned and fit out as follows:


- 2 consulting rooms
- great natural light
- Shared use of reception and waiting room
- Internal Kitchen and Toilets
- Suits Dental and Medical Practitioners
- Heritage building
- Extreme proximity to the law courts
- On-site cafe

Beanbah Chambers is located at 235 Macquarie Street - the heart of the Sydney's long standing CBD medical precinct. The property is also in close proximity to the

**Building Size** : 40 sqm  
**Land Size** : 40 sqm  
**View** : <https://www.gunningre.com.au/lease/nsw/sydney-city/sydney/commercial/health-care/5731301>

**18/235 Macquarie Street,  
SYDNEY**

 EXCLUSIVE USE

 SHARED USE  
 - Reception  
 - Kitchen  
 - Toilet



This floor plan is intended as a guide only. Layout dimension are approximate only. No representation or warranties of any nature whatsoever are given or intended. Any person using this information should rely on their own enquiries.



Plans by  
**surroundpix**  
room 014  
 1300 30 32 40