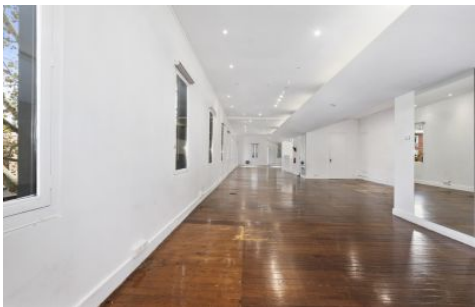


GUNNING



158a-162 Crown Street Darlinghurst NSW

Gunning RE is excited to offer to the market for lease, this impressive building in a prime CBD fringe location of East Sydney. The property sits prominently on the corner of Crown and Stanley Streets, and benefits greatly from having three street frontages. Internally, it boasts character features, creating an excellent working environment.

The property is set over two levels, with an internal staircase interconnecting the tenancies. Long-span floor plates assists the entire building to be warmed by natural light, and allows for very efficient work arrangements.

Property Details:

- > 160-280 sqm NLA (approx.)
- > Creative office layout
- > 1 secure car space (2 if you take the whole building)
- > Drenched in natural light

Building Size : 280 sqm

View : <https://www.gunningre.com.au/lease/nsw/eastern-suburbs/darlinghurst/commercial/offices/5731294>