

GUNNING



265 Riley Street Surry Hills NSW

Gunning RE is excited to offer to the market for lease, this beautiful, high-quality office accommodation in thriving Surry Hills. The property boasts stunning interior lines, which helps create an excellent working environment.

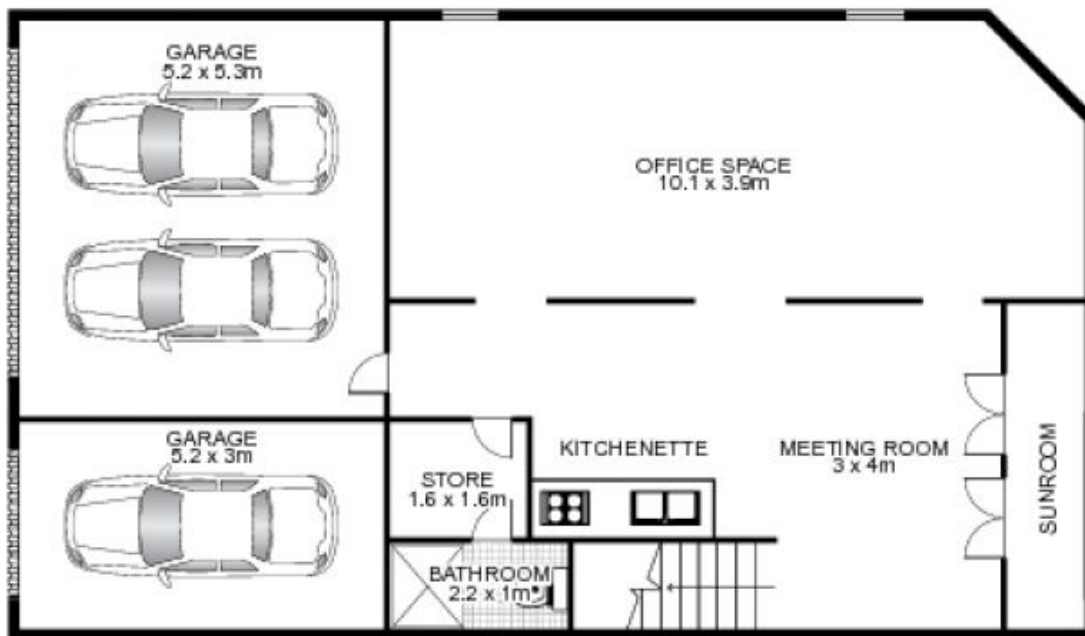
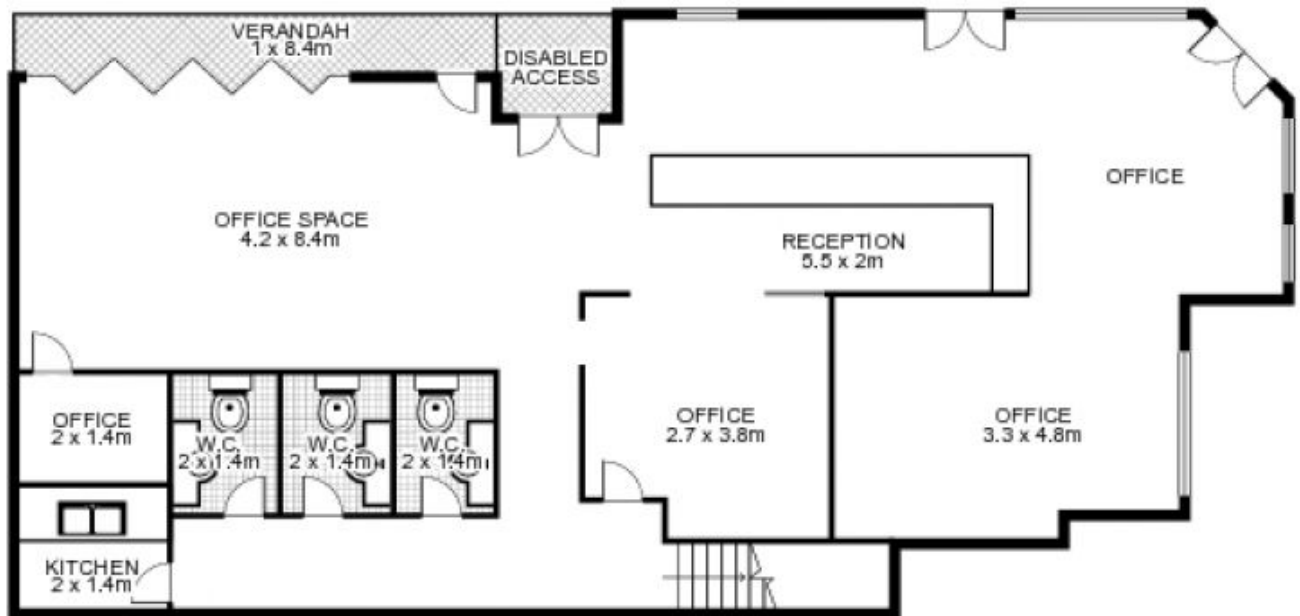
The ground floor is drenched in natural light, and is ideally configured with multiple open plan office areas. There is also the added bonus of a balcony off the main office area. The lower ground area is perfect for a boardroom/meeting room and more office accommodation.

Property Details:

- > 195 sqm NLA (approx.)
- > Contemporary office layout
- > 2 secure car spaces + storage
- > Natural light

Building Size : 195 sqm
Land Size : 288 sqm
View : <https://www.gunningre.com.au/lease/nsw/eastern-suburbs/surry-hills/commercial/offices/5731278>

263 - 265 Riley Street, SURRY HILLS



GUNNING



This floor plan is intended as a guide only. Layout dimensions are approximate only. No representation or warranties of any nature whatsoever are given or intended. Any person using this information should rely on their own enquiries.