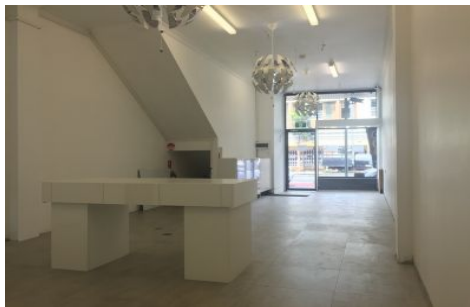
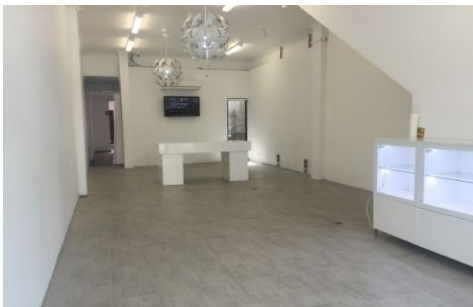


GUNNING



288 Oxford Street Paddington NSW

The shop on offer is located in the heart of Paddington, one of Sydney's strongest city-fringe precincts. The property has excellent exposure to both foot and vehicle traffic, fronting the bustling and popular Oxford Street.

The space would suit a variety of users including boutique retailers, service providers such as retail, real estate agents, accountants and tax agents, as well as medical operators (STCA).

Features include:

- 125sqm
- 2 x Internal bathrooms and kitchenette
- Bright and clean interior
- Fantastic exposure to foot traffic
- Large display window

Building Size : 125 sqm

View

: <https://www.gunningre.com.au/lease/nsw/eastern-suburbs/paddington/commercial/retail/5731266>