

# GUNNING



## Suite 102/410 Elizabeth Street Surry Hills NSW

Situated in the heart of Surry Hills, 410 Elizabeth Street is in one of Sydney's most exciting and convenient locations on the doorstep of the CBD.

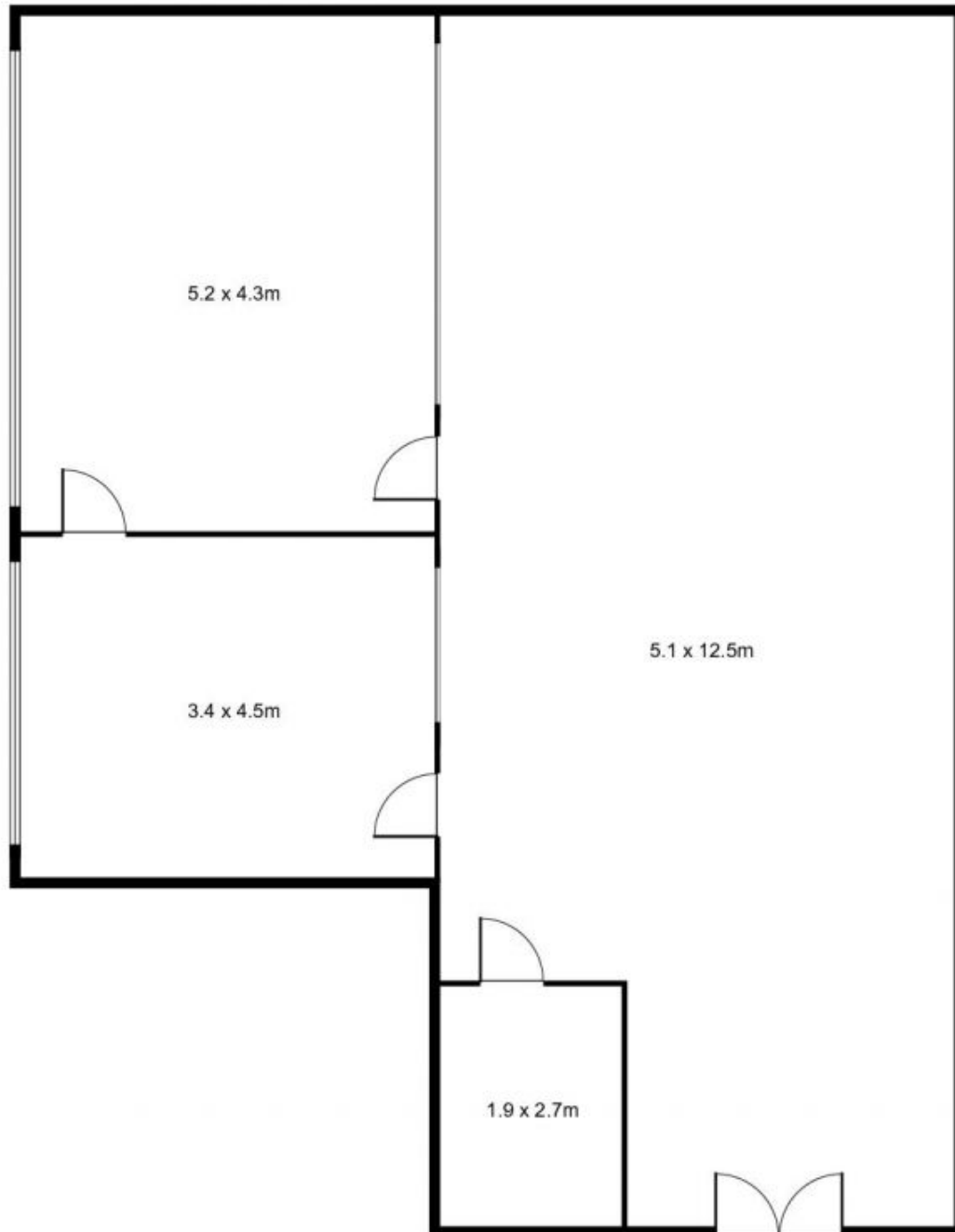
- 101sqm on Level 1
- Natural light, facing Elizabeth St
- Open plan + 2offices
- Shared toilets & meeting rooms in the building
- Lift access & kitchenette
- 300m from Central Station and next to future Light Rail

**Building Size** : 101 sqm  
**Land Size** : 101 sqm  
**View** : <https://www.gunningre.com.au/lease/nsw/eastern-suburbs/surry-hills/commercial/offices/5731263>

Contact the agent today to arrange an inspection:

Alberto Da Grava 0416 919 423

**Suite 102/ 410 Elizabeth Street,  
SURRY HILLS**



**GUNNING**



This floor plan is intended as a guide only. Layout dimension are approximate only. No representation or warranties of any nature whatsoever are given or intended. Any person using this information should rely on their own enquiries.