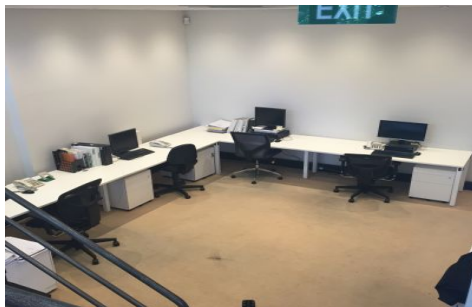
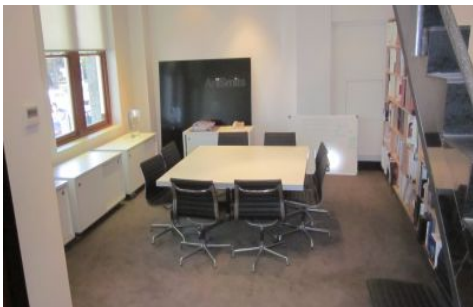


# GUNNING



This office to share is located on Chalmers street in the busy part of Surry Hills. 100 meters away from central station, the office space is facing Prince Alfred's Park and nearby to the restaurant and bar precinct of Surry Hills.

Creative furnished office to share with an Architectural company in the heart of Surry Hills business precinct.

#### FEATURES:

- 24sqm on Level 1(exclusive) + 16sqm boardroom space (shared)
- Level 1 for Lease
- Shared Boardroom
- Shared Kitchenette and Toilet

also

**Building Size** : 40 sqm  
**Land Size** : 40 sqm  
**View** : <https://www.gunningre.com.au/lease/nsw/eastern-suburbs/surry-hills/commercial/offices/5731256>