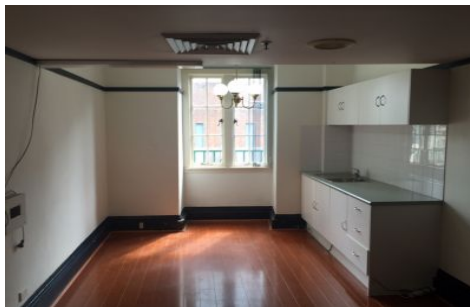
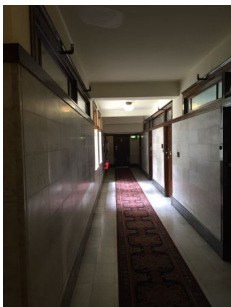


GUNNING



Level 10/155 King Street Sydney NSW

This elegant commercial suite is located in the "Trust Building" at 155 King Street, Sydney, more precisely at the corner with Castlereagh Street.

Well-known for being the home of the Westpac Bank flagship branch for many years, this heritage building inspired elegance and offers a central location in the CBD close to St James Station, Martin Place but also a direct proximity with the Supreme court, Martin Place and Hyde Park, MLC shopping centre as well as Pitt Street Mall.

Building Size : 23 sqm
Land Size : 23 sqm
View : <https://www.gunningre.com.au/lease/nsw/sydney-city/sydney/commercial/offices/5730954>

Property features:

- Level 10
- 23 sqm
- Independent air conditioning unit