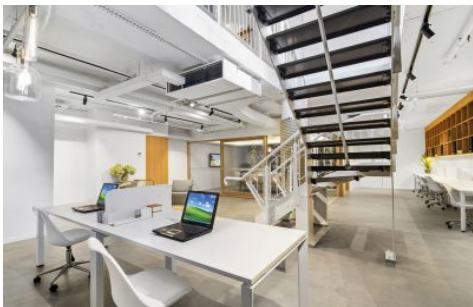


# GUNNING



## 68 Sir John Young Crescent Woolloomooloo NSW

Gunning Commercial is delighted to offer to the market Luxe Retail. Luxe is a brand new mixed use Residential/Commercial development located on the doorstep of the CBD in Woolloomooloo.

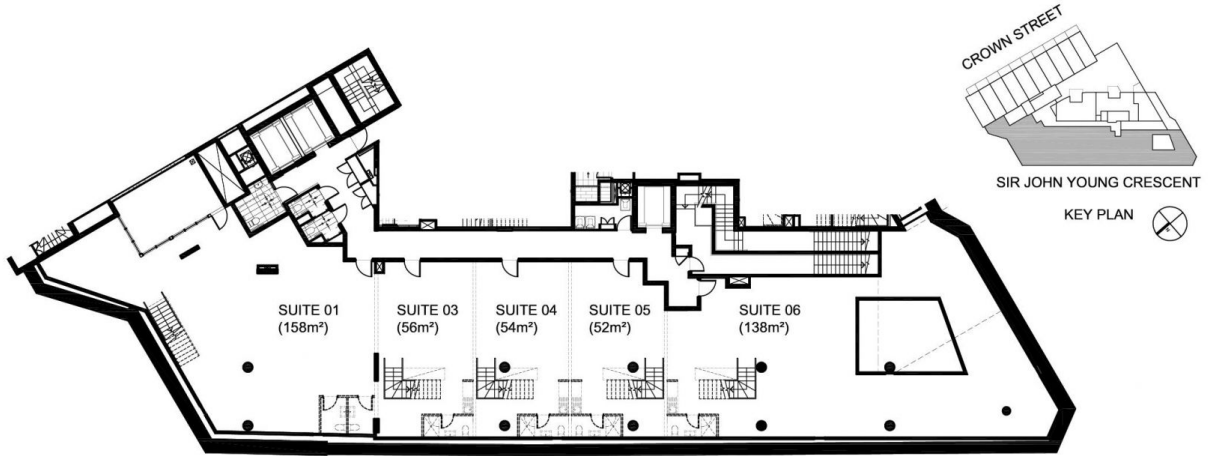
**Building Size** : 87 sqm  
**Land Size** : 200 sqm  
**View** : <https://www.gunningre.com.au/lease/nsw/sydney-city/woolloomooloo/commercial/offices/5730937>

This property offers the following Retail/ Office/ Showroom/ Medical opportunities:

TENANCY 1  
177sqm approx

TENANCY 2  
Ground floor: 73sqm

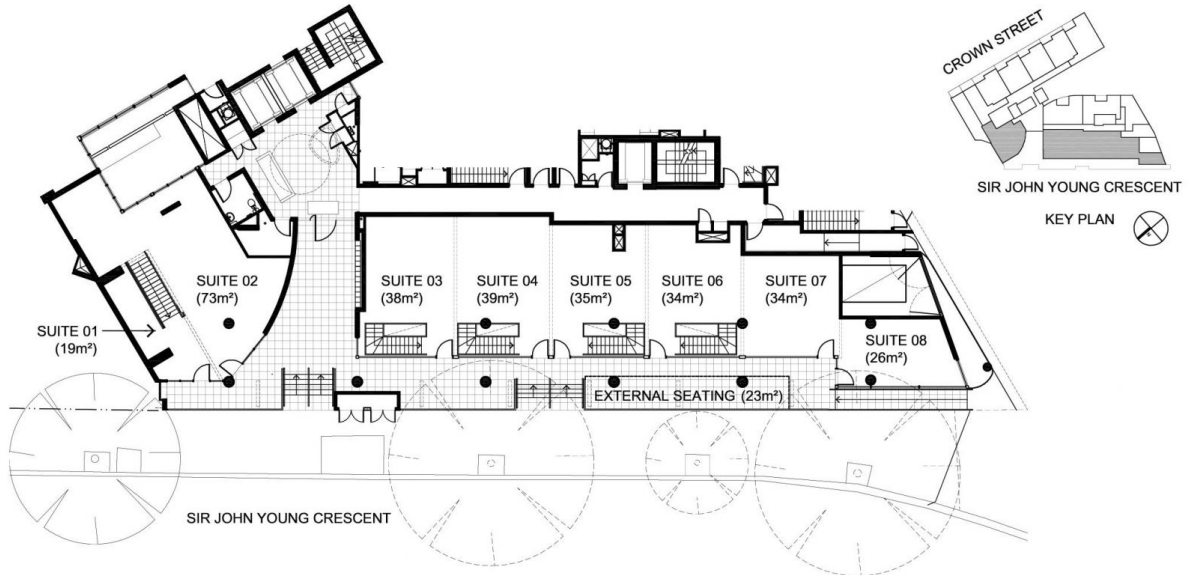
TENANCY 5  
87sqm approx



### LEVEL 1 (LOWER GROUND LEVEL)

SCHEDULE OF RETAIL / COMMERCIAL AREAS

	L2 (GROUND LEVEL)	L1 (LOWER GROUND LEVEL)	TOTAL AREA	CAR	EXT. SEATING	STORAGE LOCATION & SIZE (m²)
SUITE 01	19	158	177	B2	-	B2 (1)
SUITE 02	73	-	73	B3	-	B3 (8)
SUITE 03	38	56	94	-	-	B1 (2)
SUITE 04	39	54	93	-	-	-
SUITE 05	35	52	87	-	-	-
SUITE 06	34	138	172	2 x B3	-	-
SUITE 07	34	-	34	-	23	B1 (3)
SUITE 08	26	-	26	-	-	-
TOTALS	298 (m²)	458 (m²)	756 (m²)			



### LEVEL 2 (GROUND LEVEL)

SCHEDULE OF RETAIL / COMMERCIAL AREAS

	L2 (GROUND LEVEL)	L1 (LOWER GROUND LEVEL)	TOTAL AREA	CAR	EXT. SEATING	STORAGE LOCATION & SIZE (m²)
SUITE 01	19	158	177	B2	-	B2 (1)
SUITE 02	73	-	73	B3	-	B3 (8)
SUITE 03	38	56	94	-	-	B1 (2)
SUITE 04	39	54	93	-	-	-
SUITE 05	35	52	87	-	-	-
SUITE 06	34	138	172	2 x B3	-	-
SUITE 07	34	-	34	-	23	B1 (3)
SUITE 08	26	-	26	-	-	-
TOTALS	298 (m²)	458 (m²)	756 (m²)			