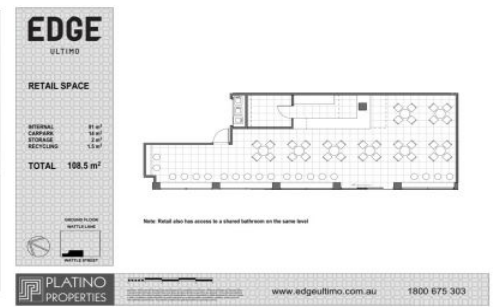
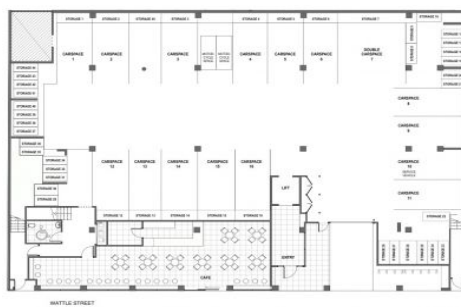


# GUNNING



## 478 Wattle Street Ultimo NSW

'Edge' Ultimo is a new development on the high end of Wattle Street, Ultimo. There is an opportunity to establish your business on the ground floor of this new development within a burgeoning local area. With the building to be completed in July 2015, you will have the opportunity to work with the developers to design the perfect space for your business. The developers will also help you attain any DA approval required for your business.

### Property Details:

- > 91sqm internal retail space
- > Huge 17m street frontage
- > 1 Car space
- > Access to disabled toilet

Located in one of Sydney's thriving city-fringe precincts, the property has excellent exposure to both foot and vehicle

**Building Size** : 91 sqm  
**Land Size** : 91 sqm  
**View** : <https://www.gunningre.com.au/lease/inner-west/ultimo/commercial/retail/5730931>