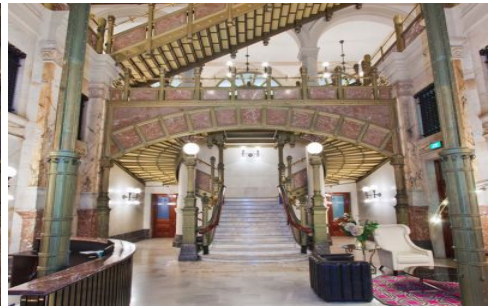


GUNNING



7/350 George Street Sydney NSW

The property is in the heart of Sydney's CBD adjacent to Martin Place and the GPO and within minutes of landmarks such as Circular Quay, Australia Square, Hyde Park, the QVB and King Street Wharf. It truly is a premier location!

The suite is a newly refurbished 20sqm open plan office suite. You also have the option to increase the office size by occupying the adjoining office suites, total available space is 106sqm.

Property Details:

- Corner office suite looking over George Street
- Large windows with great natural light
- Concierge
- Common boardroom
- Air-conditioning
- Outgoings approx \$200 per sqm

Building Size : 20 sqm
Land Size : 20 sqm
View : <https://www.gunningre.com.au/lease/nsw/sydney-city/sydney/commercial/offices/5730929>