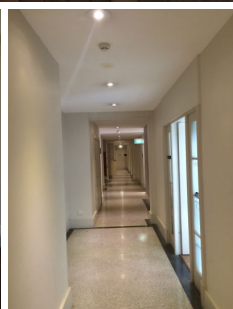


GUNNING



Level 5/501/250 Pitt Street Sydney NSW

The building is situated on 250 Pitt Street in between Park and Market streets, surrounded by Sydney's prime retail attractions including the Galleries Victoria, Pitt Street Mall & Sydney's Westfield. It is very close to bus & rail interchanges at Town Hall Station & the Queen Victoria Building.

Building Size : 39 sqm
Land Size : 39 sqm
View : <https://www.gunningre.com.au/lease/nsw/sydney-city/sydney/commercial/offices/5730899>

Being certainly one of the best small suites in the midtown precinct, this great little suite located on level 5 offers great light and aspect.

Main features:

- Polished timber floorboards;
- 39sqm;
- High ceilings;
- Looks over Pitt Street;