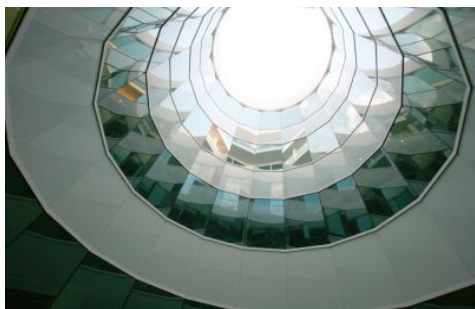


# GUNNING



## 133/10 Park Road Hurstville NSW

Gunning's is pleased to offer this open plan 100sqm commercial office in Hurstville.

The building is located next door to Westfield's and within close proximity to Hurstville Bus & Railway station. The property has Three (3) pedestrian street access from Park Road, Humphreys Lane and The Avenue. Access to the security parking and council 108 public parking space is via The Avenue entrance.

### Features:

- # 100sqm open plan commercial
- # Two(2) security parking space
- # 108 council car spaces (3 hour limit) under the building
- # CCTV Security through building
- # On-Site Cafe
- # Adjacent to Westfield Shopping Centre

**Building Size** : 100 sqm

### View

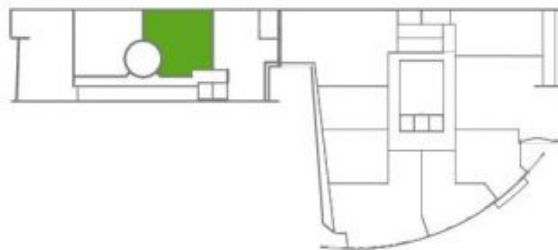
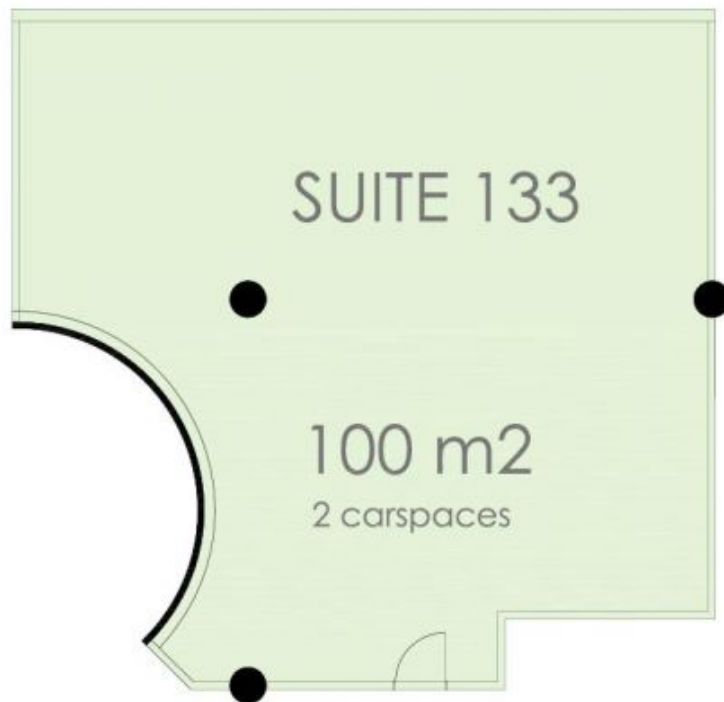
: <https://www.gunningre.com.au/lease/ns-w/st-george/hurstville/commercial/offices/5730895>



**William Gunning**  
**(02) 9310 9207**



**James McKenny**  
**(02) 9310 9208**



Level 3  
Suite 133/ Building 1, 10 Park Rd Hurstville