

GUNNING



Level 14/187 Macquarie Street Sydney NSW

Gunning Commercial is pleased to offer for sale this outstanding strata commercial suite on level 14 of the popular "Park House".

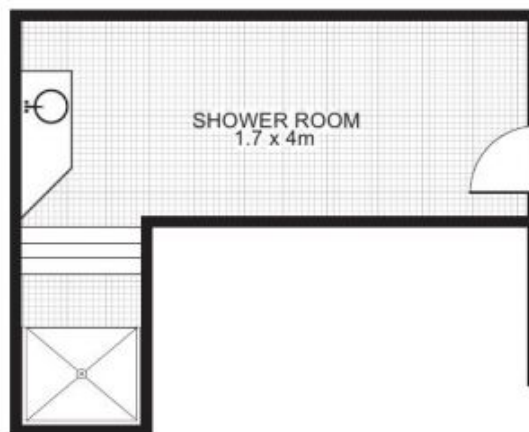
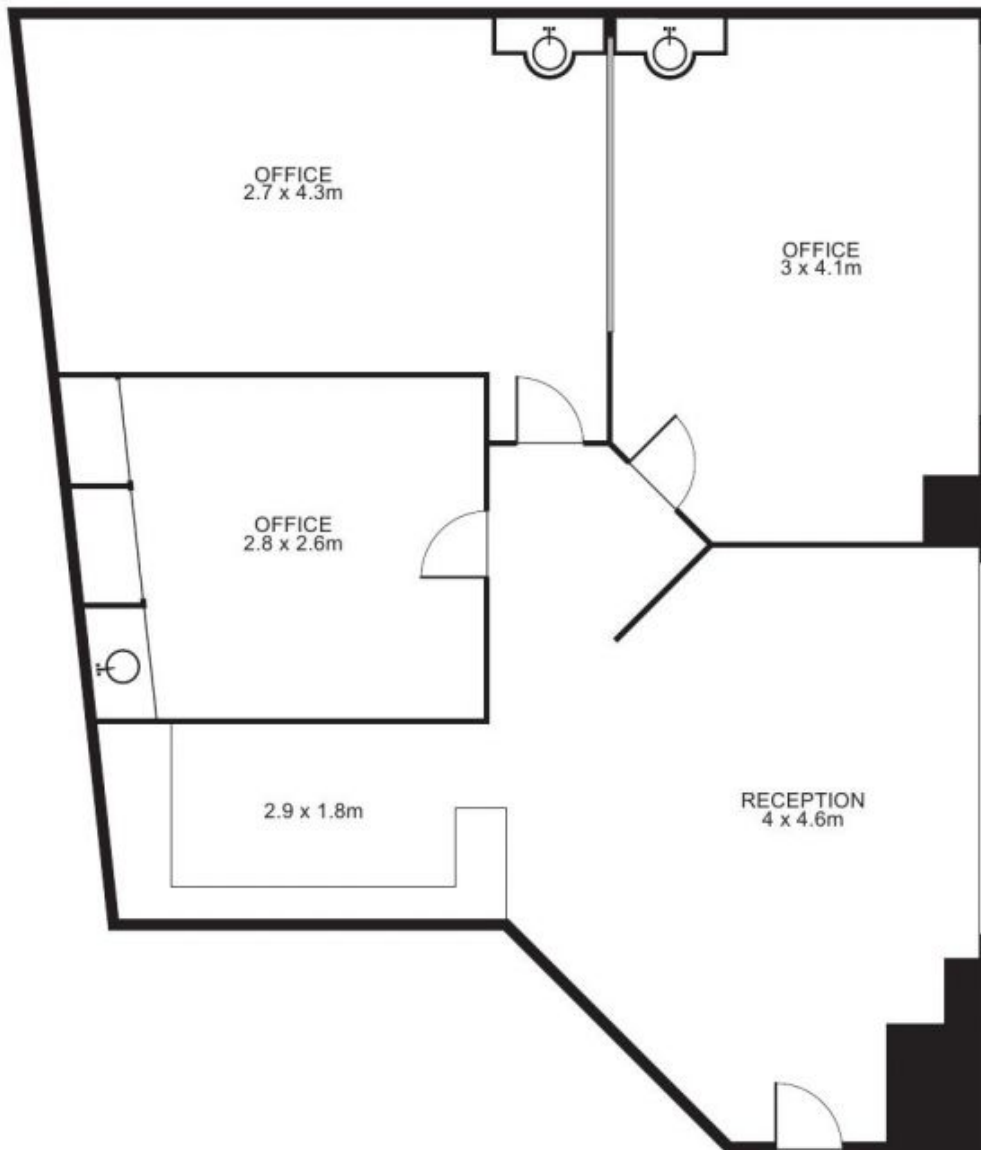
Park House is located in the heart of Macquarie Street's medical precinct and is also within close proximity to Queens Square (State and Federal Courts). Park House is surrounded by landmark heritage buildings such as Parliament House, the State Library of New South Wales, The Sydney Mint and the Reserve Bank of Australia.

The suite would suit a range of commercial operators including medical practitioners, solicitors, small/medium businesses as well as a variety of other professionals.

Other features of the suite include:

Building Size : 78 sqm
Land Size : 78 sqm
View : <https://www.gunningre.com.au/sale/nsw/sydney-city/sydney/commercial/offices/5730865>

Suite 5, Level 14, 187 Macquarie Street, SYDNEY



This floor plan is intended as a guide only. Layout dimension are approximate only. No representation or warranties of any nature whatsoever are given or intended. Any person using this information should rely on their own enquiries.