

GUNNING



632 Forest Road Bexley NSW

Previously fully licensed restaurant, the property is fit out to a very high standard with a lavish cocktail bar, stage, commercial kitchen, modern M&F and disabled toilets and separate staff toilets & shower.

KEY FEATURES

- * Land - 580sqm
- * Building - 400sqm over 2 levels
- * Outstanding outdoor areas on the ground and first floor balcony
- * Commercial Kitchen with cool room
- * Opposite council car park
- * Excellent exposure and signage
- * Drive in and drive out access
- * Previously fully licensed restaurant with long trading hours
- * Air-con throughout

Building Size : 400 sqm
Land Size : 580 sqm
View : <https://www.gunningre.com.au/lease/nsw/st-george/bexley/commercial/retail/5730840>



James McKenny
(02) 9310 9208



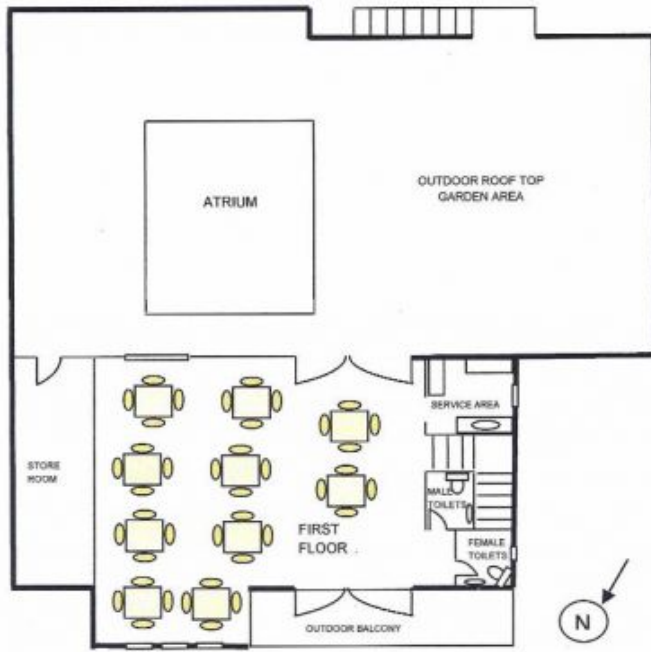
William Gunning
(02) 9310 9207

FIRST FLOOR
632 FOREST Rd Bexley

First floor seating





10 tables x 4
Total 40 seats



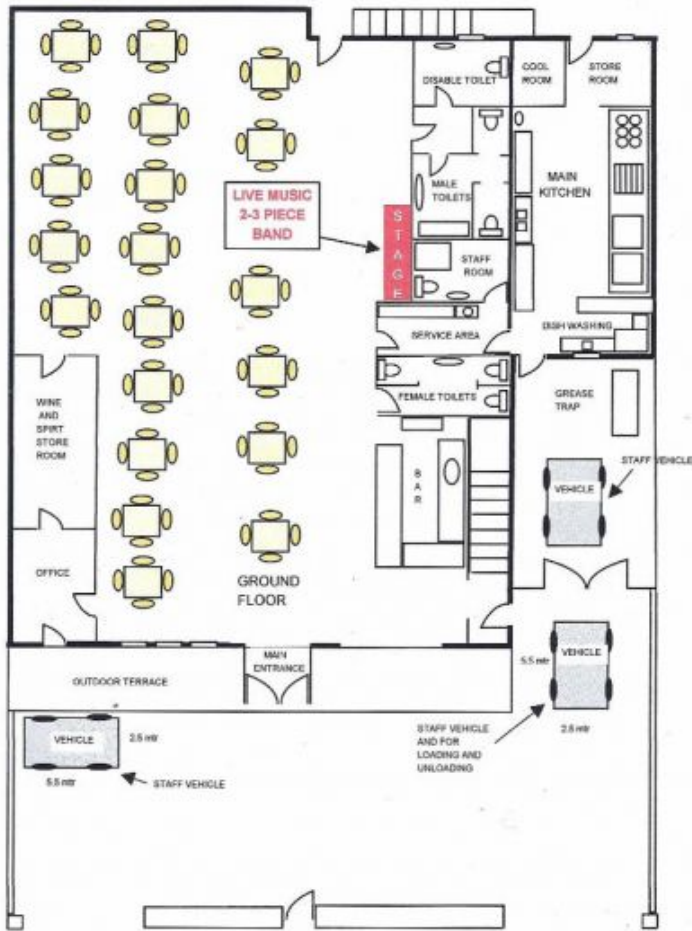
GROUND FLOOR
632 FOREST Rd Bexley

Ground floor seating

 20 tables x 4
Total 80 seats

 Onsite Parking spaces

 Council car park directly opposite
32 car spaces
Local street parking also available



← street parking

FOREST ROAD

