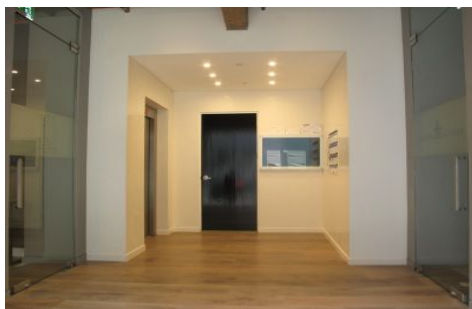


GUNNING



Level 2/01/5 Queen Street Chippendale NSW

2 🚗

Gunning Commercial is pleased to offer for lease 5 Queen Street, Chippendale. Spanning half of the second floor of the building this creative open plan office space benefits from natural light from three sides and terrific ambiance.

Building Size : 240 sqm
View : <https://www.gunningre.com.au/lease/nsw/sydney-city/chippendale/commercial/offices/5730827>

Queen Street sits just two streets back from the from the renowned Central Park Development and benefits from the vast improvement and ongoing gentrification of Chippendale.

Set your business within this creative hub and stunning building.

For further information or to arrange a time to inspect the property, please feel free to contact the agent;