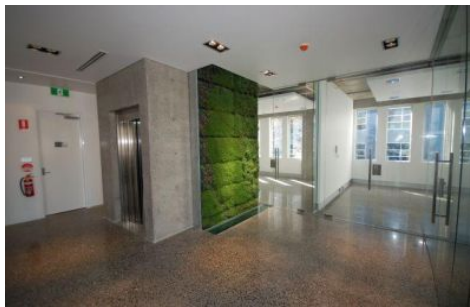


# GUNNING



## Level 1/102/441-449 Elizabeth Street Street Surry Hills NSW

Fully renovated office spaces in a commercial boutique building.

This property is located at the busy corner of Elizabeth and Devonshire Streets, next to cafes and restaurants and less than 100 meters away from Central Station. This is the perfect location!

441-449 Elizabeth Street is a building of character and is in hot demand from a variety of commercial users.

The level 1 offers the possibility to merge two or three office spaces to create a unique office space matching your needs. Possibilities of 32sqm (suite 102), 56sqm (suite 103), 31sqm (suite 104).

**Building Size** : 32 sqm

**View** : <https://www.gunningre.com.au/lease/nsw/eastern-suburbs/surry-hills/commercial/offices/5730821>