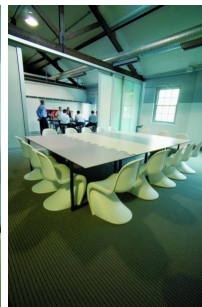


GUNNING



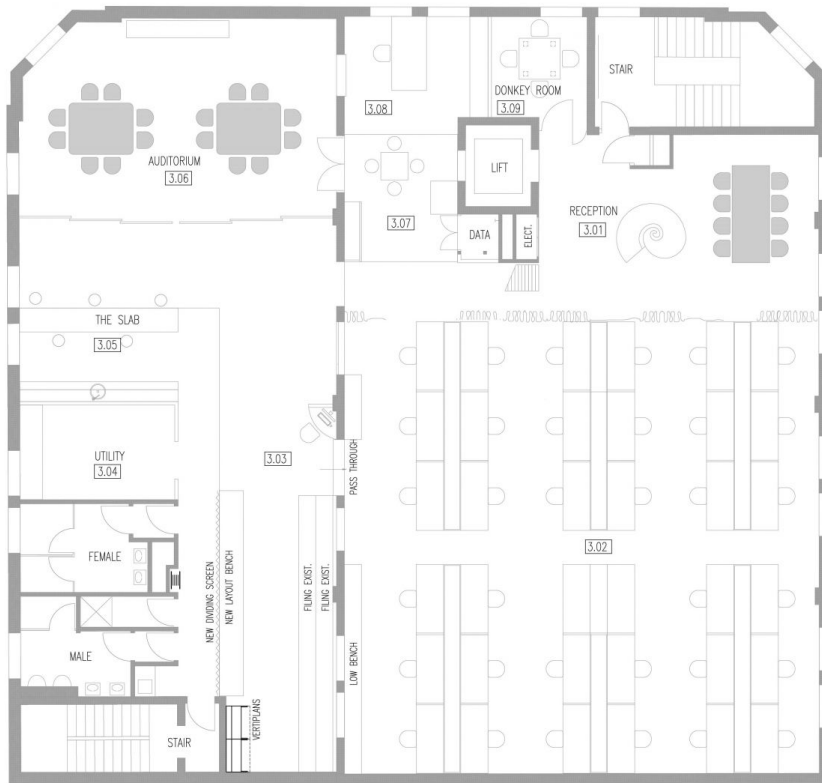
Level 3/47 Murray Street PYRMONT NSW

Gunning Commercial is excited to offer for lease the magnificent opportunity to secure one of Sydney's most desirable warehouse/office conversions in the heart of Pyrmont. On offer is this fully fitted out designer fit out, this refurbished whole floor in this character corner warehouse style building opposite Pyrmont Bridge is a short walk to Darling Harbour and the CBD.

- * Fully Fitted out for 40 + staff approx
- * Boardrooms and offices
- * Soaring 4+ Metre ceilings
- * Polished wooden floors
- * Loads natural light,
- * Full cabling and server room

The floor plates offer a fantastic open plan working environment making it the perfect creative hub.

Building Size : 445 sqm
Land Size : 445 sqm
View : <https://www.gunningre.com.au/lease/nsw/sydney-city/pyrmont/commercial/offices/5730818>



FOR LEGEND & NOTES REFER DRAWING E01

ISSUE	ISSUE DETAILS	DATE	CHKD
A	PRELIMINARY DESIGN	24/09/06	
B	REVISED DESIGN	26/11/06	
C	REVISED SKING	14/02/07	
D	REVISED SKING	13/08/08	
E	REVISED SKING	11/02/09	
F	REVISED SKING	18/02/09	
G	REVISED SKING	26/02/10	
H	REVISED SKING	17/11/11	
I	REVISED SKING	20/02/11	
J	REVISED SKING	18/02/12	
K	REVISED SKING	20/03/13	
L	REVISED SKING	18/06/13	
M	REVISED SKING	26/07/13	
N	REVISED SKING	12/03/14	



MEDLAND MITROPOULOS
 www.medland.com.au info@medland.com.au
 Level 3, 47 Murray St Pyrmont NSW 2009
 © 02 9552 2022 © 02 9552 2044
 ABN: 81 010 761 378

MEDLAND MITROPOULOS
 REVISED FITOUT 2006
 LEVEL 3, 47-49 MURRAY STREET
 PYRMONT, NSW
 2009

FURNITURE LAYOUT

DRAWN: ML
 DESIGNED: CP
 DATE: MAY 2010
 SCALE: AS SHOWN AT A1
 DRAWING No: **S01397-SEATS-1**