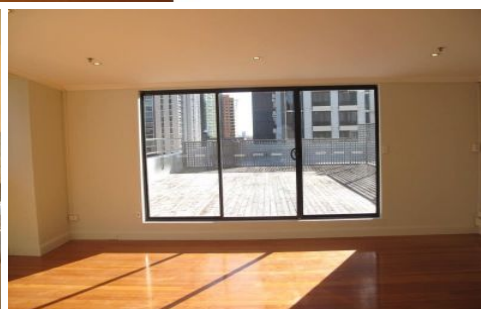


# GUNNING



## Level 7/104 Bathurst Street Sydney NSW

Prime Location. Corner of Bathurst Street with Pitt Street.

The 'International House' is a 7 storey building. It is got 2 lifts, and it is close to the Galleries Victoria, World Square and Hyde Park.

Just minutes to Town Hall Train Station.

We are offering the top floor premises (Level 7) which features:

- Numerous court yards/ outdoor areas
- Completely self contained
- 2 Bathrooms
- Shower
- Kitchen
- Air Conditioning

**Building Size** : 214 sqm  
**Land Size** : 214 sqm  
**View** : <https://www.gunningre.com.au/lease/nsw/sydney-city/sydney/commercial/offices/5730798>