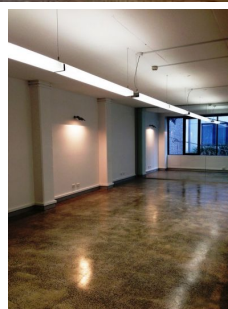


GUNNING



203/35 Buckingham Street Surry Hills NSW

Gunning's are pleased to offer this fantastic commercial suite located in the Heart of Surry Hills - just 200m from Central Station providing the easiest of access to the CBD and surrounds.

35 Buckingham Street is one of those commercial buildings which others are compared to - it sets the standard for Surry Hills creative commercial accommodation.

Features include:

- 86sqm
- Clear Span, White Shell Office
- Good Natural Light
- Boardroom
- Polished Concrete Floor
- Exposed A/C
- Lift Access

Building Size : 86 sqm
View : <https://www.gunningre.com.au/lease/nsw/eastern-suburbs/surry-hills/commercial/offices/5730776>