

GUNNING



Level 1/1/32 Bayswater Road Potts Point NSW

Gunning commercial is pleased to offer for lease this highly sought after commercial kitchen located on Bayswater Road in Potts Point.

The property is situated in the heart of the Potts Point commercial precinct, moments from Kings Cross Station and approximated 2 kilometers from the Sydney CBD.

The kitchen is fitted with the following equipment:

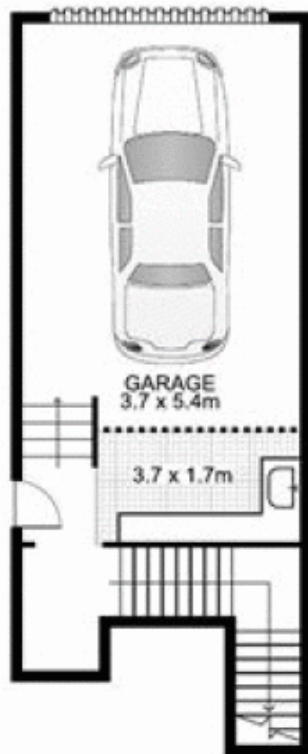
- 3 x 2 door upright stainless steel Everest Freezers- (1000 liters each). Both in excellent working condition.
- 1 x brand new walk in freezer - 1.8 m x 1.8 m (4750 liters) with shelving, lights and safety bell
- 1 x walk in coolroom with new motor (5500 liters) with shelving, lights and safety bell
- 2 x commercial Moffat ovens with 4 burner stoves on top of each oven and 1 large salamanda

Building Size : 80 sqm
Land Size : 80 sqm
View : <https://www.gunningre.com.au/lease/nsw/eastern-suburbs/potts-point/commercial/leisure/5730749>

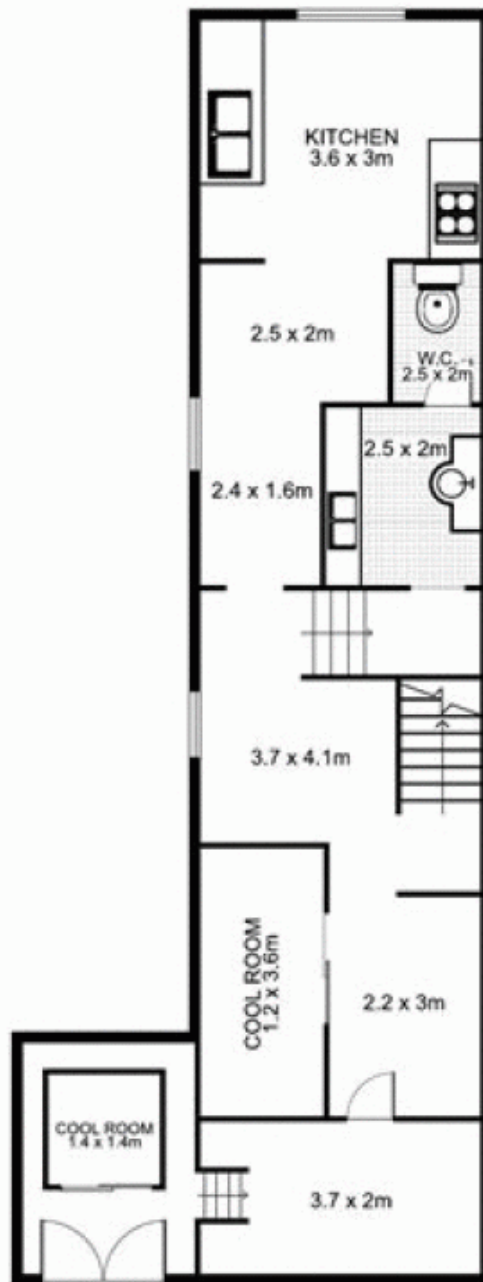


Daniel Gunning
02 9698 0222

32 Bayswater, POTTS POINT



LOWER LEVEL



UPPER LEVEL



This floor plan is intended as a guide only. Layout dimensions are approximate only. No representation or warranties of any nature whatsoever are given or intended. Any person using this information should rely on their own enquiries.