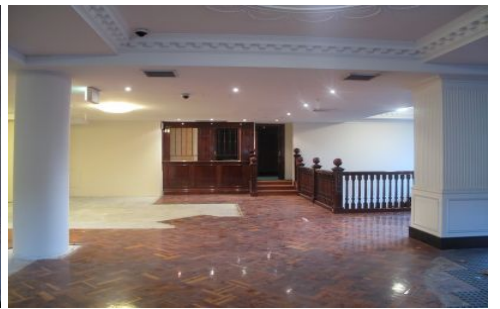


GUNNING



209 Harris Street Pyrmont NSW

209 Harris Street is located on an intersection which is arguably one of the busiest in Pyrmont with a huge amount of pedestrian and vehicular traffic.

Harris Street is the main arterial route to Pyrmont peninsula from the south and is often referred to as 'food street' due to its large number of eateries and pubs.

The area has a large residential and commercial population as a result of larger developments including Jackson's landing and The Promontory to name a few.

We have initiated a complimentary mix of tenants, in this multi-level retail/commercial premises. There is a well run, popular cafe facing the Pyrmont bridge, and we have a gym operator who has leased the lower ground floor.

Building Size : 150 sqm
Land Size : 427 sqm
View : <https://www.gunningre.com.au/lease/nsw/sydney-city/pyrmont/commercial/offices/5730716>