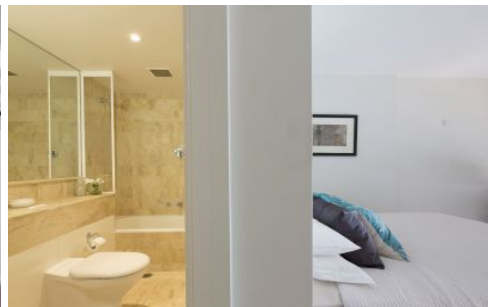


GUNNING



313A/133 Goulburn Street Surry Hills NSW

2 🛏 3 🚿 1 🚗

A spacious split-level apartment, enjoy a historic warehouse conversion with city-fringe parking adding big value. Industrial-style windows & an in/outdoor balcony ensure oversized sensations.

View : <https://www.gunningre.com.au/lease/nsw/eastern-suburbs/surry-hills/residential/apartment/5730663>

A spacious split-level apartment, enjoy a historic warehouse conversion with city-fringe parking adding big value. Industrial-style windows & an in/outdoor balcony ensure oversized sensations.



Hong Bao
02 9310 9219

- ? In popular Sydney Mansions building
- ? French doors to balcony, ducted a/c
- ? Stone kitchen, storage & gas cooking
- ? Hardwood timber stairs to upper level
- ? Built in robes & modern ensuite w/ tub
- ? Valuable internal laundry, dryer
- ? Indoor heated pool & equipped gym
- ? A cafe & dining hotspot, walk to CBD