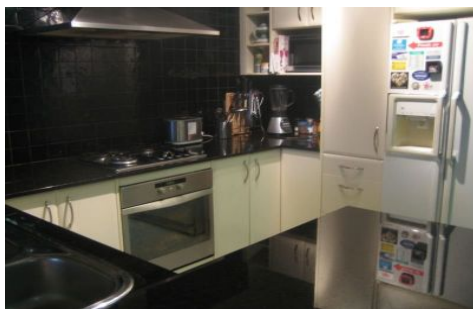
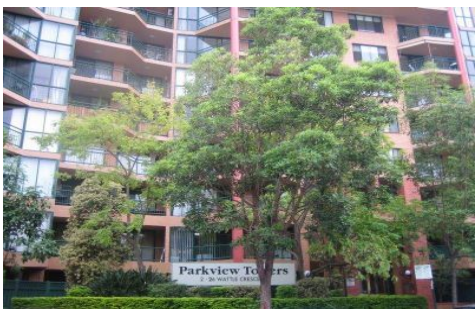


GUNNING



186/2-26 Wattle Crescent PYRMONT NSW

2  2  1 

Beautiful, modern 2 bedroom apartment in great security building. Spacious living room and separate dining room, stunning open plan kitchen with stainless steel appliances including fridge. 2 stylish bathrooms, main bedroom with ensuite, large bedrooms both with built-ins. Fantastic floorboards, new carpet, internal laundry room with dryer and washing machine, undercover security parking, huge enclosed balcony good for sunroom or study, large outdoor balcony ideal for entertaining. Quality fixtures and fittings throughout. Complex includes BBQ area, indoor pool, spa, sauna and gym. Short distance to Darling Harbour, Sydney CBD, Star City, Fish Markets and transport. A MUST SEE!

View : <https://www.gunningre.com.au/lease/nsw/sydney-city/pyrmont/residential/apartment/5730652>