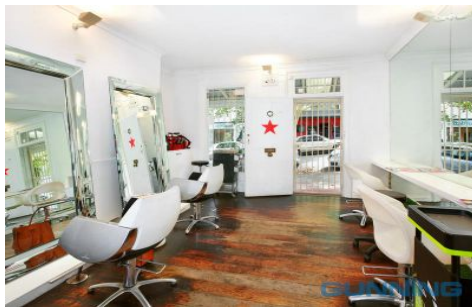


GUNNING



273 Goulburn Street DARLINGHURST NSW

Located in Darlinghurst's premier Crown Street retail precinct, this location suits any retailer, lifestyle or commercial operator who wants exposure amongst some of Sydney's best independent brands and companies.

- Retail terrace
- 100m²; approx total area over 3 levels
- 4 metre frontage
- Rear courtyard area
- Suits retail, commercial, hospitality (STCA) uses

For a inspection please contact

Daniel Gunning
0413 051 235

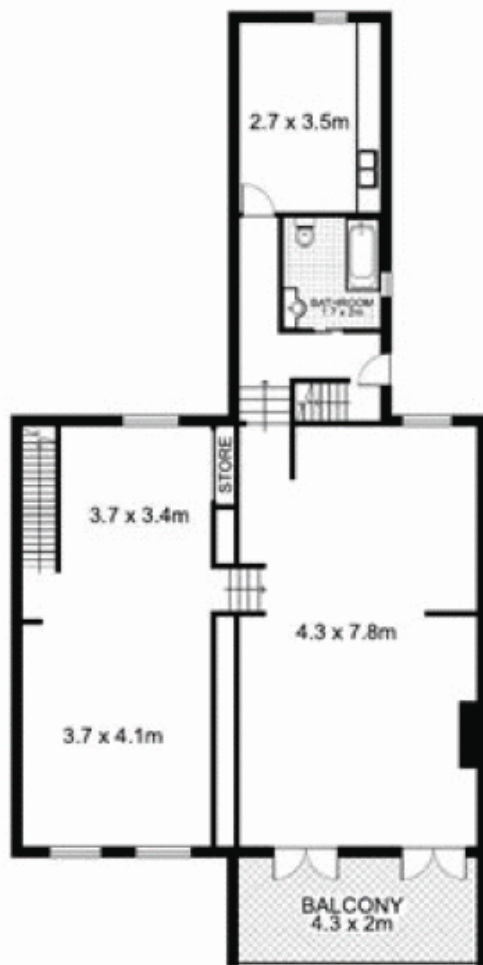
Tom Speakman

Building Size : 100 sqm
Land Size : 100 sqm
View : <https://www.gunningre.com.au/lease/nsw/eastern-suburbs/darlinghurst/commercial/retail/5730630>

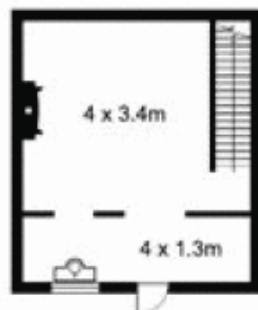


Daniel Gunning
02 9698 0222

273-275 Goulburn Street, SURRY HILLS



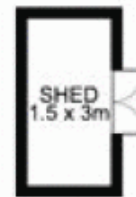
FIRST FLOOR



BASEMENT



ROOFTOP



GROUND FLOOR

Plans by
surroundpix
.com.au
 **1300 30 32 40**

This floor plan is intended as a guide only. Layout dimension are approximate only. No representation or warranties of any nature whatsoever are given or intended. Any person using this information should rely on their own enquiries.