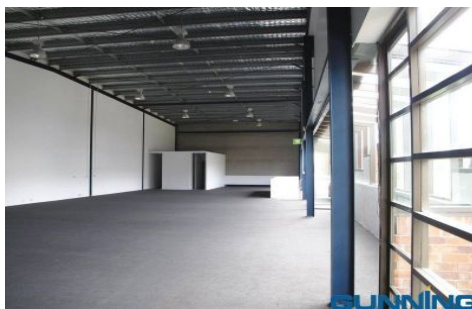
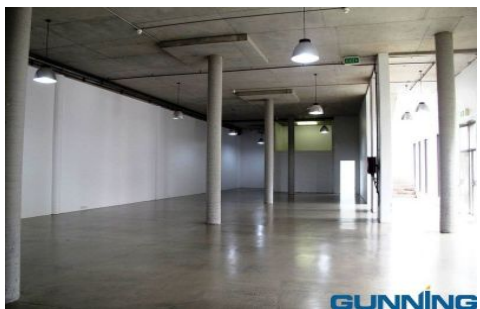


# GUNNING



## 614 Botany Road ALEXANDRIA NSW

This beautiful, refurbished and spacious building is located on Botany Road and would work perfectly as an office only or office/ showroom.

It features:

- 600 sqm split into 2 -300 sqm floor plates.
- self contained toilets (4)
- self contained shower
- self contained kitchenette
- 3 car spaces included
- Polished concrete floor on ground floor and carpet on the 1st floor
- Balconies on 1st floor
- 6 metres ceilings height
- Open plan
- Bright- big windows

**Building Size** : 600 sqm  
**Land Size** : 600 sqm  
**View** : <https://www.gunningre.com.au/lease/nsw/eastern-suburbs/alexandria/commercial/offices/5730618>