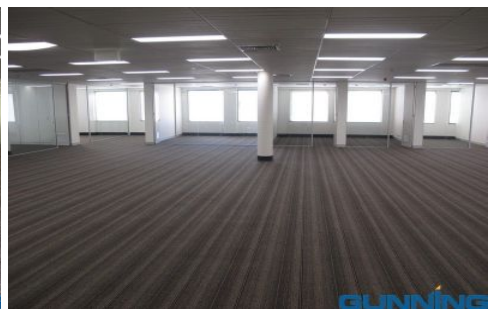


GUNNING



Suit 3.01/12 Butler Road HURSTVILLE NSW

STYLE

Mix of open plan working and partitioned offices with common amenities.

Currently 477sqm but can also be subdivided into 2 suites of 251sqm and 226sqm at the owners cost.

LOCATION

Located above the well renown HCF dental and eye care clinics, the building is less than a minutes walk to the Hurstville Station entrance and major bus stop.

FEATURES

- * 7 partitioned offices
- * Board room
- * Kitchen/Lunch room
- * Bathroom
- * Available with current fit out or without

Building Size : 477 sqm

Land Size : 477 sqm

View : <https://www.gunningre.com.au/lease/nsw/st-george/hurstville/commercial/offices/5730598>



James McKenny
(02) 9310 9208