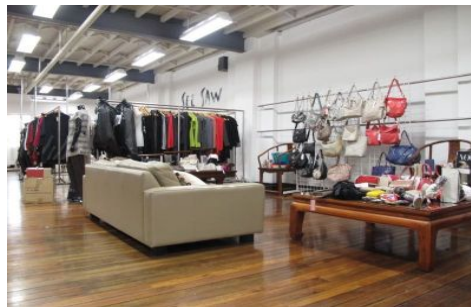


# GUNNING



## Level 4/69 Regent Street, CHIPPENDALE NSW

Gunning Commercial is pleased to offer for lease this beautifully appointed character office in the heart of Chippendale. The property sits in very close proximity to both Central and Redfern Railway Stations making it highly accessible.

The property boast high-gloss polished timber floors and great ceiling clearance. The property offers both male and female amenities and kitchenette internally.

This Property Offers;

- Lift access
- Ducted A/C
- Open plan layout
- Cat 5 Cabling

**Building Size** : 258 sqm  
**Land Size** : 258 sqm  
**View** : <https://www.gunningre.com.au/lease/nsw/sydney-city/chippendale/commercial/offices/5730534>