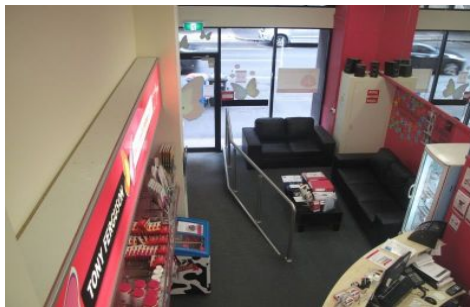


GUNNING



Shop/259 Clarence Street SYDNEY NSW

This shop features:

- Suitable for Food, retail, showroom, office
- Close to the Queen Victoria Building and Town Hall.
- Includes 2 levels:
Ground level: 100.3 sqm
Mezzanine: 59.2 sqm
- Wide frontage
- Great natural light
- Toilets within common area
- Incentives on offer

Building Size : 159 sqm
Land Size : 159 sqm
View : <https://www.gunningre.com.au/lease/nsw/sydney-city/sydney/commercial/retail/5730532>

For more information or to inspect, please do not hesitate to contact:

Laura Nocera
P: (02) 96980222

<https://www.gunningre.com.au>
Just another WordPress site