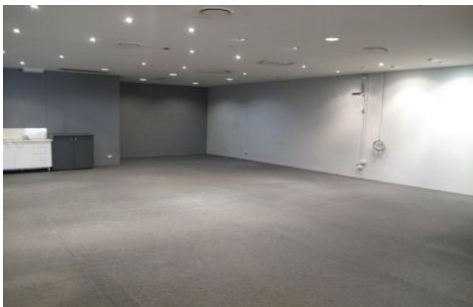


GUNNING



395 Bourke Street Darlinghurst NSW

Gunning Commercial is pleased to present this sensational open plan shop/ground floor work space in the heart of Darlinghurst.

Situated directly opposite Taylor Square and adjacent from Deus Ex Machina and the Beresford Hotel, this property is in a prime location.

This property features;

- 150sqm (approx) retail
- Rear lane access
- Fully Air Conditioned
- Smoking hot location

For further information or to inspect this property, please don't hesitate to contact;

Building Size : 150 sqm
Land Size : 150 sqm
View : <https://www.gunningre.com.au/lease/nsw/eastern-suburbs/darlinghurst/commercial/retail/5730516>