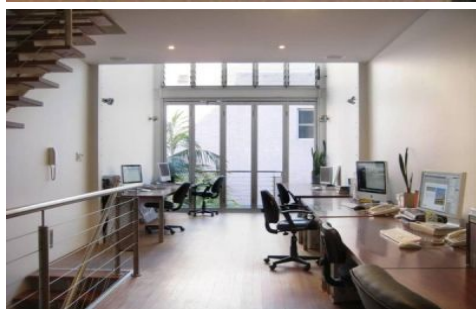
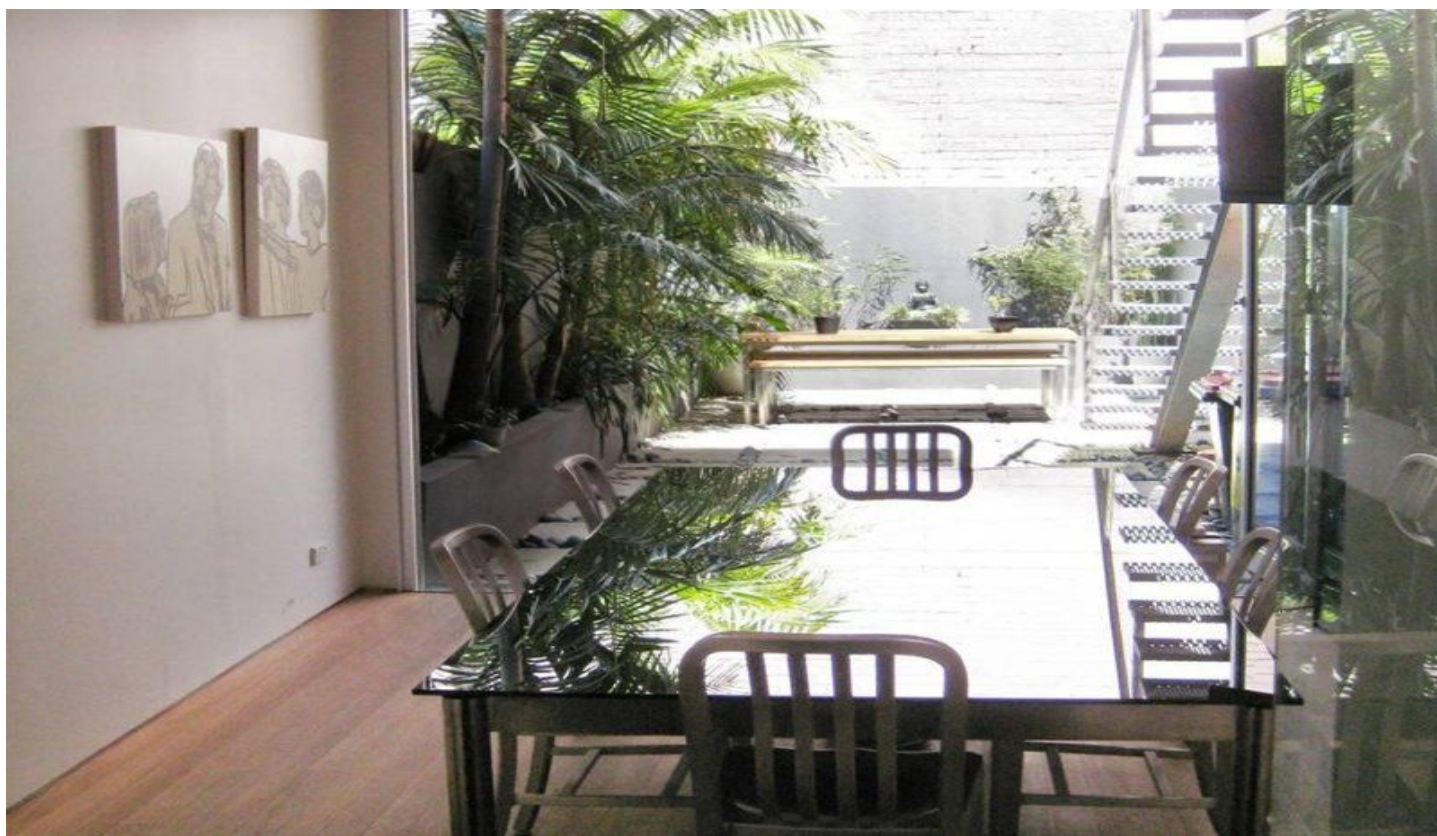


GUNNING



49 Reservoir Street SURRY HILLS NSW

Well appointed commercial terrace flooded with natural light with work live potential. Located at the lower end of Reservoir Street Surry Hills in close proximity to both central station and cafes.

- 165sqm
- Work/ live potential
- Fully fitted work and play
- Potential for 2 cars

For further information or to enquire, please contact:

George Prassas
P: (02) 9698 0222
M: 0416 622 026
E: gp@gunningcommercial.com

Building Size : 165 sqm
View : <https://www.gunningre.com.au/lease/nsw/eastern-suburbs/surry-hills/commercial/offices/5730449>