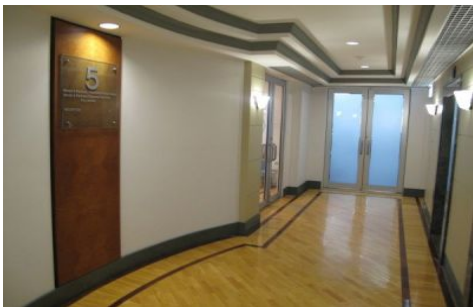


GUNNING



Level 5 49 Kent Street SYDNEY NSW

Located in mid town area, in close proximity to Town Hall.

Fitted office previously occupied by accounting firm.

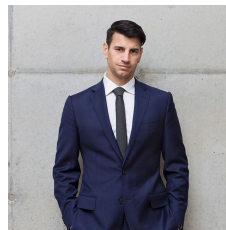
160sqm @ \$72,000 per annum + GST gross
5 x executive offices and 7 external work stations. Large board room.

100sqm @ \$50,000 per annum + GST gross
3 x executive offices and 4 x internal work stations. Large board room and open plan work area.

60sqm @ \$30,000 per annum + GST gross
2 x executive offices and 3 x internal work stations.

Located in close proximity to Townhall, QVB and Cockle Bay.

Building Size : 60 sqm
Land Size : 60 sqm
View : <https://www.gunningre.com.au/lease/nsw/sydney-city/sydney/commercial/offices/5730390>



Daniel Gunning
02 9698 0222