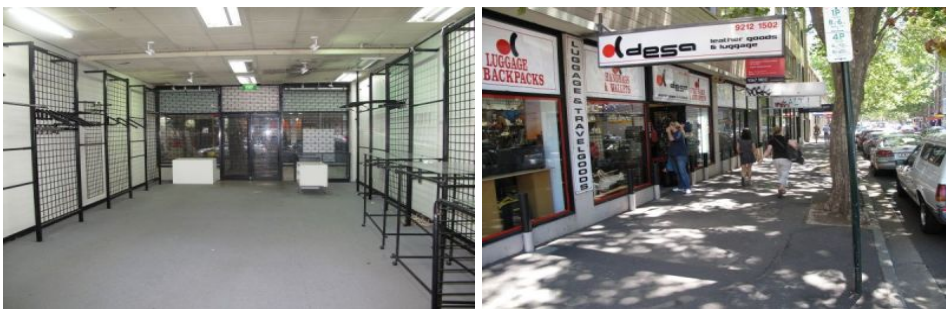


# GUNNING



## 6b/17-51 Foveaux Street SURRY HILLS NSW

Clear span retail shop in the heart of Surry Hills.

Situated on busy Foveaux Street with extremely high pedestrian traffic flow and 200 metres to Central Station.

Enormous exposure.  
Fantastic passing trade.  
Great neighbouring tenants include Dolina, Sherradan and more.

For further information or to inspect, please contact:

Tom Speakman  
P: (02) 9698 0222  
M: 0412 891 330  
E: [ts@gunningcommercial.com](mailto:ts@gunningcommercial.com)

**Building Size** : 74 sqm  
**View** : <https://www.gunningre.com.au/lease/nsw/eastern-suburbs/surry-hills/commercial/retail/5730384>