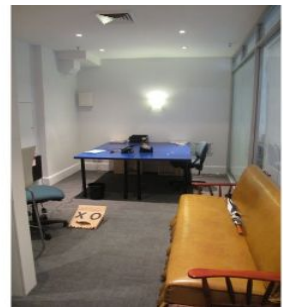


GUNNING



Shop 1/69 Regent Street Chippendale NSW

Front exposure to Regent Street with rare rear lane access.

Situated directly behind Central Station on the edge of Broadway and Regent Street in Chippendale. The rear of the property backs on the brand new Fraisers Development site called Central Park.

Recently refurbished.
Brand new A/C.
New bathroom facilities.
Loads of colleges close by.
Huge pedestrian traffic.

For further information or to inspect, please contact:

Tom Speakman
Phone: 02 9698 0222 / 0412 891 330

Building Size : 203 sqm
Land Size : 203 sqm
View : <https://www.gunningre.com.au/lease/nsw/sydney-city/chippendale/commercial/retail/5730380>