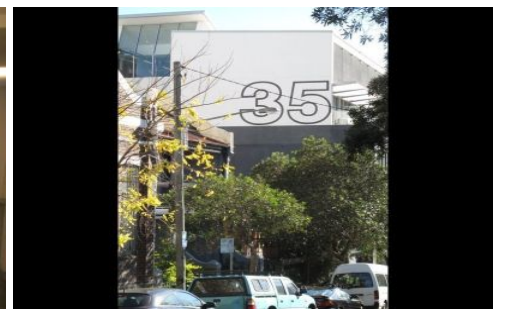
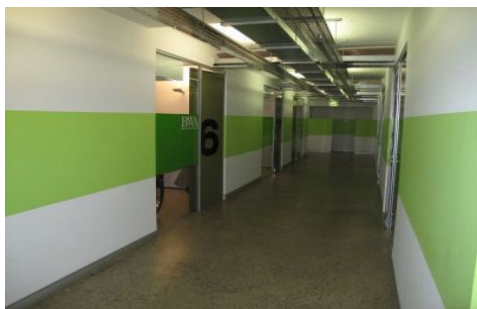


# GUNNING



## Suite 208/35 Buckingham Street Surry Hills NSW

Highly sought after commercial space.

Located seconds from Central Station in creative hub of Surry Hills.

- High ceilings.
- Exposed aircon.
- Polished concrete floors.
- Great natural light.
- Seconds from transport and amenities.
- Modern fixture and fittings.

For further information or to inspect, please contact:

George Prassas  
P: (02) 9331 6988  
M: 0416 622 026

**Building Size** : 43 sqm  
**View** : <https://www.gunningre.com.au/lease/nsw/eastern-suburbs/surry-hills/commercial/offices/5730317>