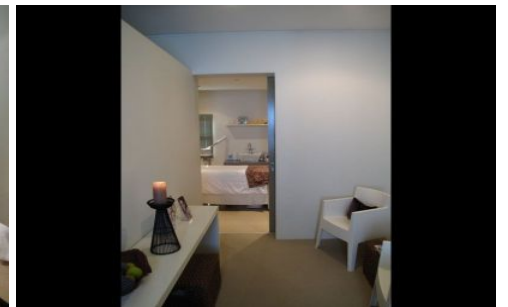
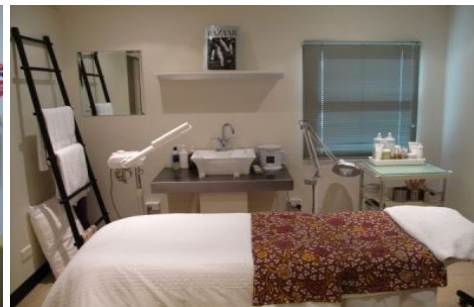


GUNNING



85 Elizabeth Street PADDINGTON NSW

88sqm of office space above beauty operator, ideally suiting acupuncture or similar use.

Located on the Northern end of Elizabeth Street Paddington, this office is in close proximity to busy Oxford Street.

- Air conditioned.
- 5 partitioned rooms or open plan.
- Excellent natural light.
- Separate entry.
- Kitchenette.
- Shower and bathroom.
- All day parking in surrounding streets.
- Leafy outlook.

For further information or to inspect, please contact:

Building Size : 80 sqm

View

: <https://www.gunningre.com.au/lease/nsw/eastern-suburbs/paddington/commercial/offices/5730304>