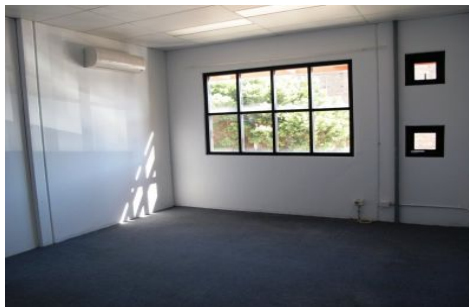


GUNNING



10/5-7 Bermill Street ROCKDALE NSW

Size:
127sqm

Annual Rent:
\$22,000 p.a. + GST Gross

Style:
Tilt slab construction with carpeted mezzanine office and open plan working area.

Location:
Located just off West Botany Street, this property offers easy vehicular access to and from the property. Close proximity to Botany Bay & Rockdale Plaza.

Features:
On-Site Parking

Building Size : 127 sqm
View : <https://www.gunningre.com.au/lease/nsw/st-george/rockdale/commercial/industrial/5730301>



William Gunning
(02) 9310 9207