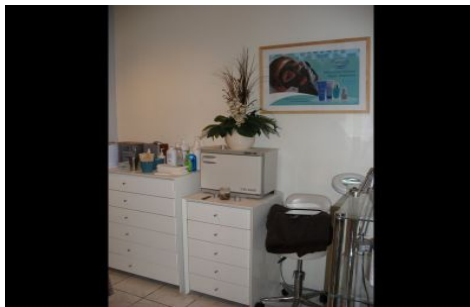


GUNNING



257 Oxford Street BONDI JUNCTION NSW

Style:
-Fully Partitioned Retail Offices
-Huge Exposure
-Suits Medical or Beauty Shop

Building Size : 110 sqm
View : <https://www.gunningre.com.au/lease/nsw/eastern-suburbs/bondi-junction/commercial/retail/5730287>

Area: 110 sqm

Lease type: Assignment of sub-lease.

3 MONTHS RENT FREE FROM LEASE COMMENCEMENT.

Location:
-Oxford Street, Bondi Junction
-Stones Throw to Westfield Complex
-Close to Bondi Junction Train Station
-5 minutes to Bondi Beach

<https://www.gunningre.com.au>
Just another WordPress site