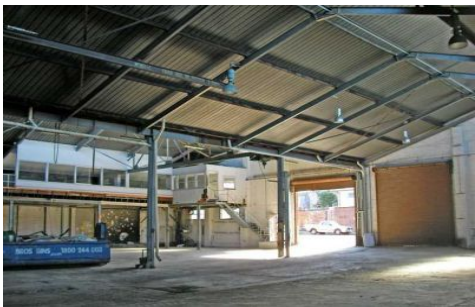


# GUNNING



## 43 College Street NEWTOWN NSW

Style: Large open plan warehouse with three full height roller shutters accessible from 2 streets. Features a saw tooth roof between 6 & 9.5 meters of internal height.

Area: 1,288 SQM

Rent: P.O.A

Outgoings: \$22 per square meter

Location: Located 100 meters off busy King St, the property lies in the heart of inner Sydney and less than 10 minutes to South Sydney.

Features Description:

-Excellent Street Presence

**Building Size** : 1288 sqm

**View** : <https://www.gunningre.com.au/lease/nsw/inner-west/newtown/commercial/industrial/5730281>