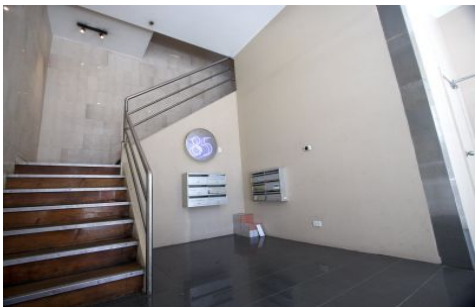


GUNNING



85 William Street Darlinghurst NSW

LESSOR SAYS LEASE!

Style:

- Huge, Bright, Open Plan, Creative Office Space!
- Classic Timber Flooring

Location:

- Hyde Park end of William Street, moments to Sydney CBD
- Situated on the corner of Crown + William Street, close to all amenities, restaurants, bars + East Sydneys famous Stanley Street.

Featured Description:

- Large Open Plan
- Kitchenette Facilities
- Natural Light From 3 sides
- Perfect Creative Office of Corporate Headquarters

Building Size : 200 sqm

View : <https://www.gunningre.com.au/lease/nsw/eastern-suburbs/darlinghurst/commercial/offices/5730279>