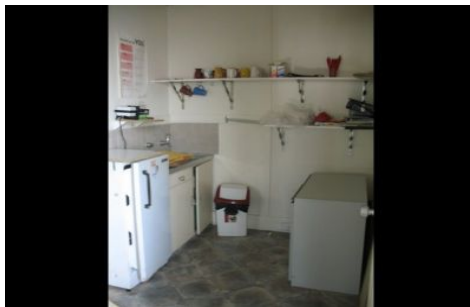
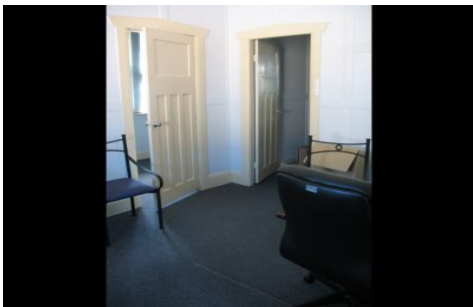


# GUNNING



## 310b Railway Parade CARLTON NSW

Excellent exposure with high level passing traffic.

Located on corner of busy Railway Parade and Jubilee Avenue, Carlton. Situated opposite train station. Short walk from Kogarah shopping centre.

**Building Size** : 80 sqm  
**View** : <https://www.gunningre.com.au/lease/nsw/st-george/carlton/commercial/offices/5730244>

Two street frontages with glass shopfront  
Good natural light  
Air-conditioning + kitchenette on first floor  
Immediate vicinity of Kogarah & Hurstville town centres  
Signage potential