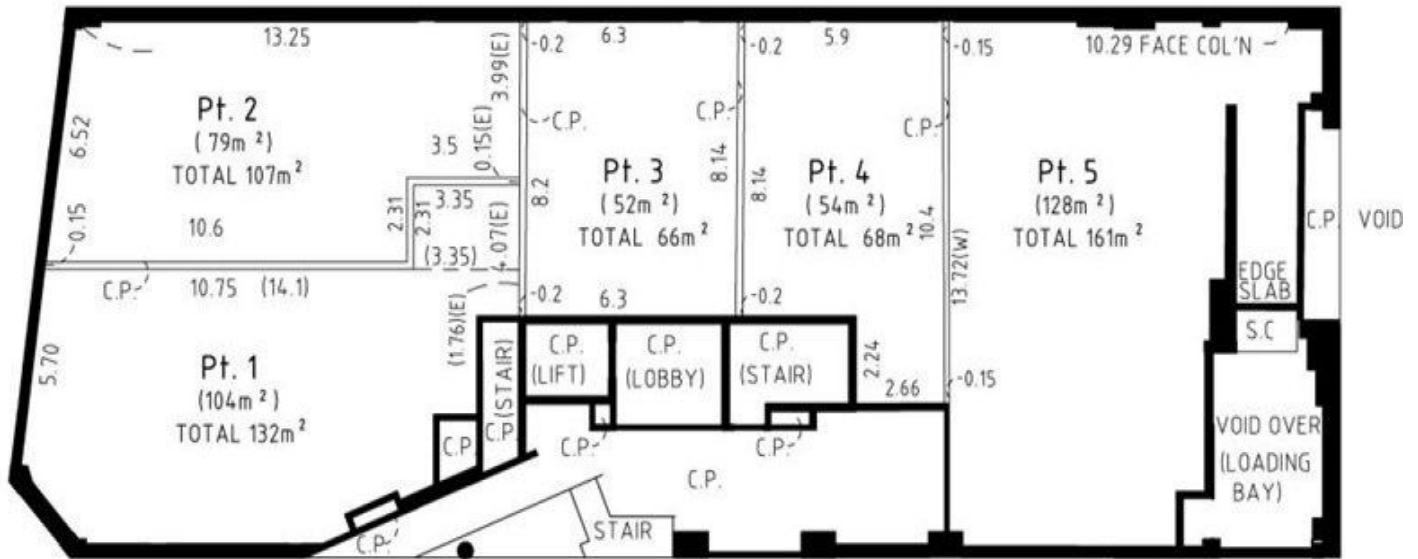


# GUNNING



GROUND FLOOR PLAN



## Concord

Lot 1 - Corner Majors Bay Road and Jellico Streets

Style: Newly Refurbished Retail with huge street presence

Location: Concord is a well established and extremely popular residential suburb in Sydney's vibrant inner west being 13km's by road west of CBD. The appeal of Concord and it's retail village atmosphere has increased and is underpinned by new residential developments at BreakfastPoint, Cabarita, Rhodes and Mortlake. The recent upgrade of the strip by Canada Bay council has substantially increased pedestrian access. Alfresco / sidewalk dining and restaurant, cafe; eateries are now established in the area surrounding the site.

Features Description: The building was recently refurbished, with it designed to achieve a high visual

**Building Size** : 132 sqm

**View** : <https://www.gunningre.com.au/sale/nsw/inner-west/concord/commercial/retail/5730203>