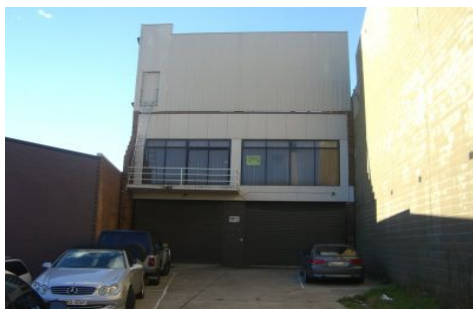


GUNNING



519-521 King Georges Road BEVERLY HILLS NSW

Ground floor office/ showroom with first floor office & rear lane access for 7 cars. The property has male & female amenities + kitchenette.

This property is situated on the corner of Stoney Creek Road & King Georges Road, metres from the Beverly Hills retail strip & railway station, and only 500m to the M5 on & off ramps (both directions).

- ? 1st floor office - 175sqm
- ? Showroom - 80sqm
- ? Air-Conditioned & Carpeted
- ? Partitioned office area
- ? Ample car parking
- ? Rear lane access

Building Size : 255 sqm
Land Size : 429 sqm
View : <https://www.gunningre.com.au/lease/nsw/st-george/beverly-hills/commercial/offices/5730186>