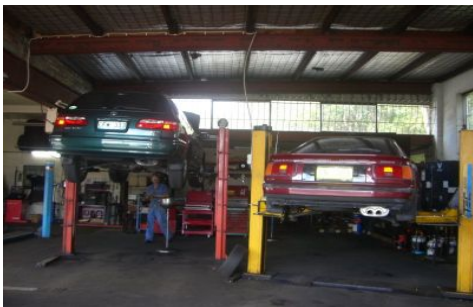


GUNNING



91-95 Stoney Creek Road BEXLEY NSW

The building is constructed of brick and metal, with re-enforced concrete floors.

Equipment & Inventory/ Stock are included (list available on request).

Located on busy Stoney Creek Road, this property offers easy access to both the M5 and Forest Road.

- ? Walk-in/ Walk-out business
- ? 11 car spaces outside
- ? 6 car spaces inside
- ? Toilet/ Shower
- ? Main road exposure

Building Size : 180 sqm
Land Size : 505 sqm
View : <https://www.gunningre.com.au/lease/nsw/st-george/bexley/commercial/industrial/5730184>



William Gunning
(02) 9310 9207