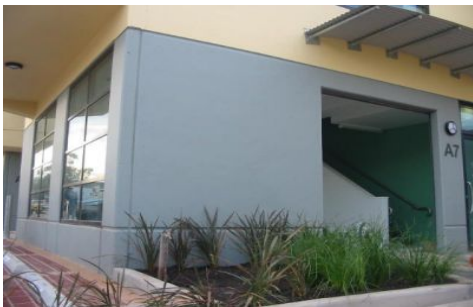


GUNNING



A7/15 Forrester Street KINGSGROVE NSW

The first floor offices are fully airconditioned and carpeted. The ground floor has low clearance storage and showroom with toilet and small kitchenette facilities.

Forrester Street is conveniently located off Kingsgrove Road which provides access to the M5 motorway and Canterbury Road.

Kingsgrove transport services include a Railway Station and RTA buses.

Hi-Tech commercial/industrial unit with total building area of 118sqm

2 allocated car spaces

On-Site cafe

Corner unit with great natural light

Fully alarmed

Building Size : 118 sqm

View : <https://www.gunningre.com.au/lease/nsw/st-george/kingsgrove/commercial/industrial/5730170>