

GUNNING



262 Oxford Street Bondi Junction NSW

Substantial commercial kitchen and retail shop.

Located at the western end of Bondi Junction.

Unique opportunity to lease a commercial kitchen plus shop.

Property is over 2 levels with rear access.

Key location in Bondi Junction. One of the only large commercial in the eastern suburbs.

Existing extraction, cool rooms and general fitout stays with the premises, ready to go.

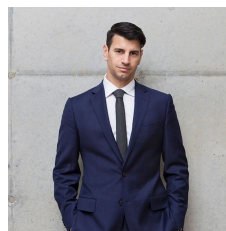
Ground floor: 40sqm - shop, 60sqm - kitchen, 50sqm - food preparation area.

Lower ground: Store room - 40sqm, Food preparation area - 35sqm, Cool room - 35sqm.

Car park / loading bay: 30sqm + 20sqm mezzanine area.

Building Size : 320 sqm

View : <https://www.gunningre.com.au/lease/nsw/eastern-suburbs/bondi-junction/commercial/retail/5730165>



Daniel Gunning
02 9698 0222