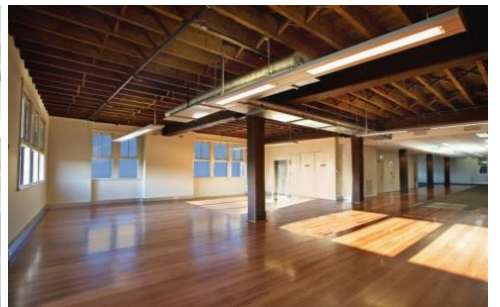
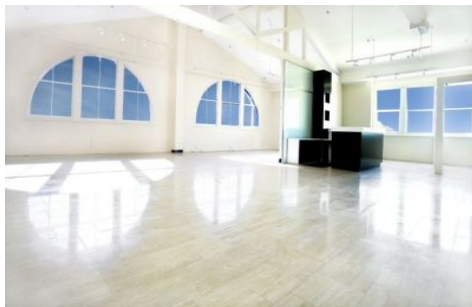
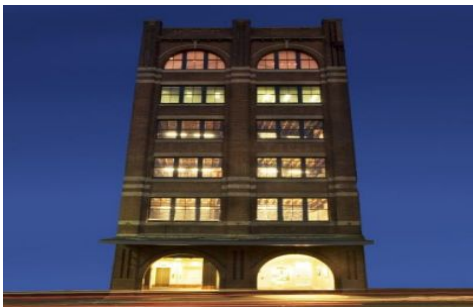


GUNNING



22 City Road CHIPPENDALE NSW

DOING BUSINESS IN STYLE

A 5 level heritage building which has been meticulously refurbished, in a manner which has preserved the charm and charisma of its heritage together with modernising all the services which have been upgraded or replaced.

The building comprises of:

- 1 lift, each floor individually lockable.
- 5 security car spaces
- Beautifully refurbished marble foyer, which includes automatic security opening doors, intercom and alarm.

Areas (whole floors):

Level 1, 2 and 3 372sqm each,
the incomparable Level 4 385sqm
OR in one line 1,501sqm (approx.)

Building Size : 1501 sqm
View : <https://www.gunningre.com.au/lease/nsw/sydney-city/chippendale/commercial/offices/5730162>



Daniel Gunning
02 9698 0222